



## Matterport Property Report

### Kellogg School Gym Side

Indoor Scanned Area 15,711 sq. ft.

Sizes and dimensions are approximate; actual may vary

#### Indoor Dimensions

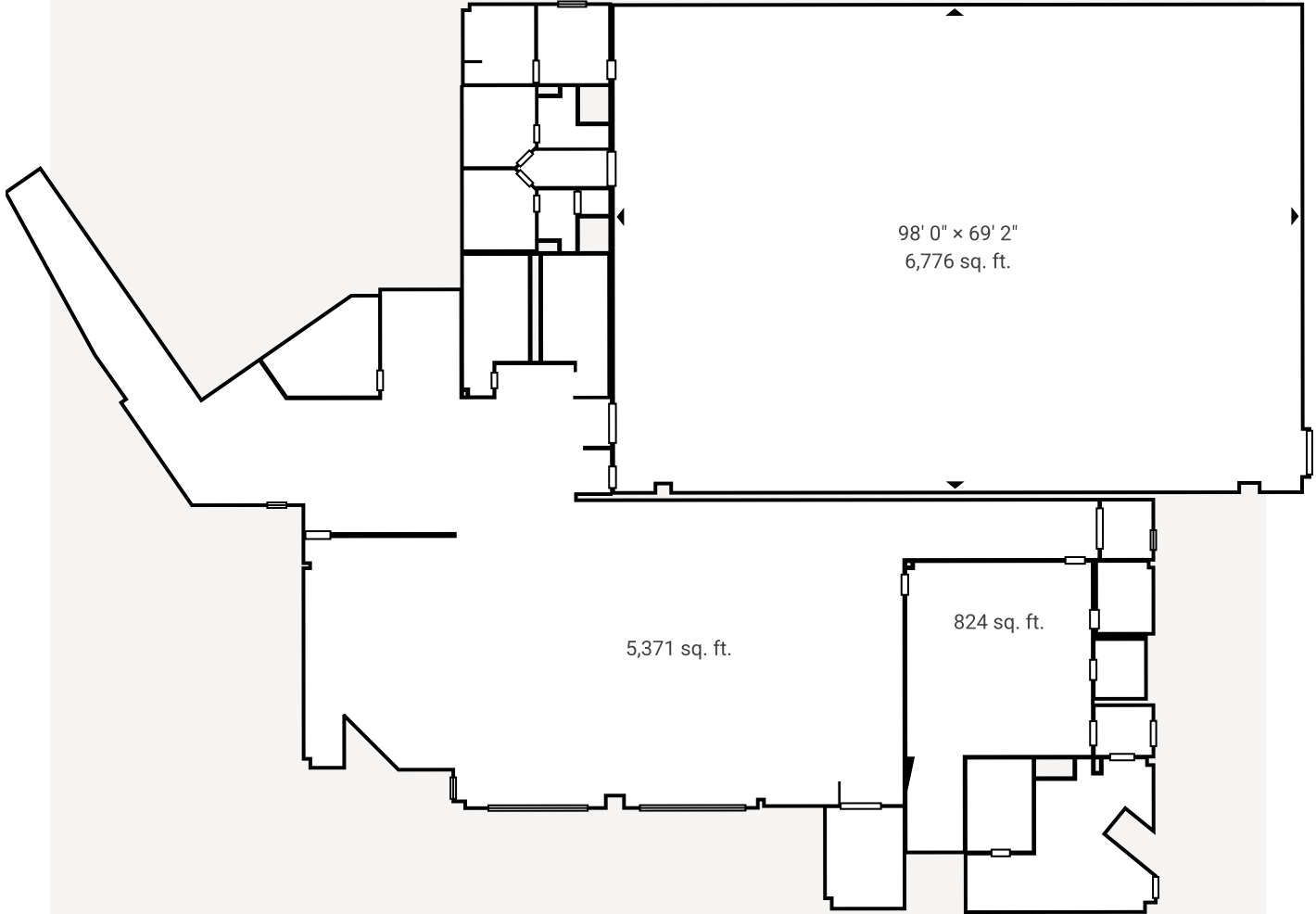
Room	Dimensions	Ceiling Height	Net Floor Area	Gross Floor Area	Floor
Floor 1	-	-	14,785 sq. ft.	15,711 sq. ft.	-
Other	98' 0" x 69' 2"	25' 2"	6,776 sq. ft.	6,983 sq. ft.	Floor 1
Other	N/A	11' 9"	5,371 sq. ft.	5,708 sq. ft.	Floor 1

Other	N/A	8' 11"	824 sq. ft.	875 sq. ft.	Floor 1
Other	N/A	N/A	372 sq. ft.	433 sq. ft.	Floor 1
Other	N/A	10' 1"	165 sq. ft.	188 sq. ft.	Floor 1
Other	10' 10" × 14' 1"	10' 1"	152 sq. ft.	179 sq. ft.	Floor 1
Other	N/A	8' 3"	156 sq. ft.	177 sq. ft.	Floor 1
Other	9' 11" × 11' 0"	9' 10"	108 sq. ft.	130 sq. ft.	Floor 1
Other	10' 0" × 11' 0"	9' 1"	111 sq. ft.	127 sq. ft.	Floor 1
Other	10' 2" × 11' 3"	9' 1"	111 sq. ft.	127 sq. ft.	Floor 1
Other	9' 2" × 13' 0"	14' 4"	120 sq. ft.	135 sq. ft.	Floor 1
Other	10' 2" × 11' 4"	9' 1"	111 sq. ft.	130 sq. ft.	Floor 1
Other	7' 8" × 9' 11"	9' 1"	75 sq. ft.	96 sq. ft.	Floor 1
Other	N/A	9' 1"	59 sq. ft.	70 sq. ft.	Floor 1
Other	7' 1" × 8' 1"	9' 2"	57 sq. ft.	73 sq. ft.	Floor 1
Other	8' 0" × 6' 10"	9' 2"	55 sq. ft.	71 sq. ft.	Floor 1
Other	6' 11" × 8' 0"	7' 9"	56 sq. ft.	76 sq. ft.	Floor 1

Other	N/A	8' 4"	55 sq. ft.	66 sq. ft.	Floor 1
Other	N/A	8' 4"	39 sq. ft.	49 sq. ft.	Floor 1
Other	4' 1" x 3' 4"	8' 3"	14 sq. ft.	20 sq. ft.	Floor 1
<b>Indoor Property Totals</b>	-	-	<b>14,785 sq. ft.</b>	<b>15,711 sq. ft.</b>	-

## Layout

### Floor 1





GROSS INTERNAL AREA  
 FLOOR 1: 15514 sq ft  
 TOTAL: 15514 sq ft  
 SIZES AND DIMENSIONS ARE APPROXIMATE, ACTUAL MAY VARY.